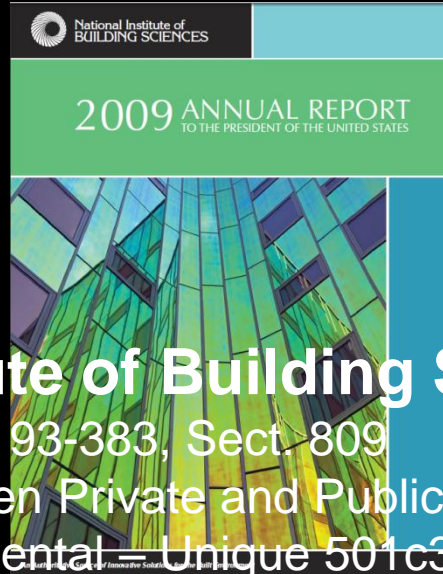


building**SMART** alliance presents:

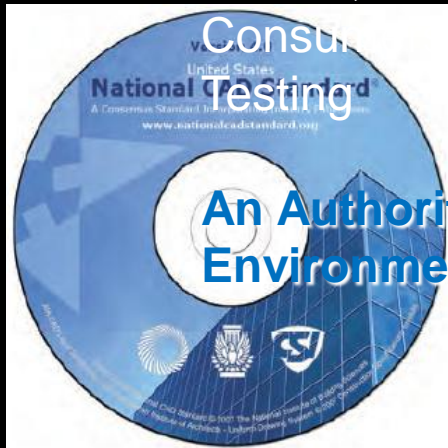
# Delivering Profoundly Improved Facilities

Deke Smith  
Executive Director  
buildingSMART alliance



# National Institute of Building Sciences

- 1974 - Public Law 93-383, Sect. 809
  - Bridge between Private and Public Construction
  - Non-governmental – Unique 501c3 Organization
  - Unique in that it represents all disciplines in industry
    - Board includes - Architects, Engineers, Contractors, Insurers, Unions, Manufacturers, Legal, Housing, Vendors, Owners, State & Federal Government, Codes & Standards, and



An Authoritative Source of Innovative Solutions for the Built Environment



An Authoritative Source of Innovative Solutions for the Built Environment

FINAL REPORT | DECEMBER 2007

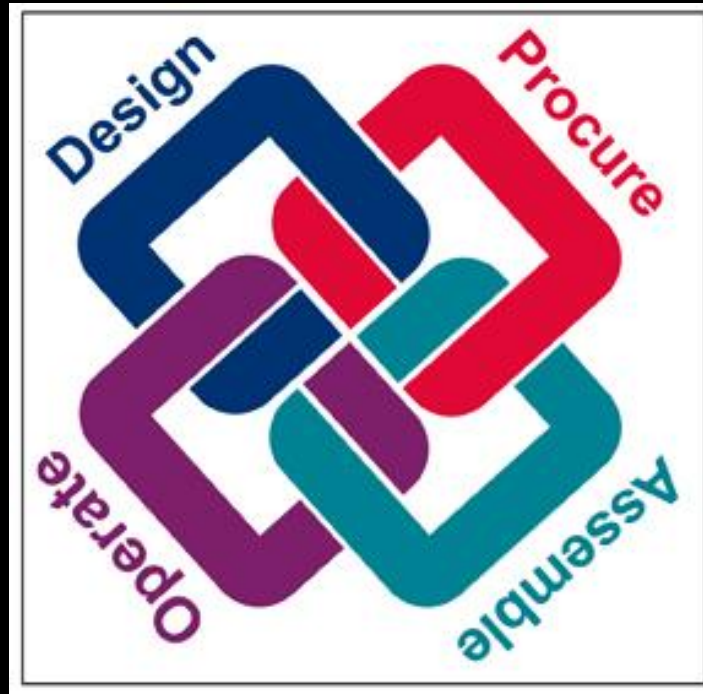


**How we can help you:**  
A neutral, international and unique organization supporting open BIM through the life cycle.

- Build SMART to build GREEN
- Improve your business processes
- Develop new business models
- Extend your value chain

**We have regional chapters in Europe, North America, Australia, Asia and Middle East.**

- What we do:**
- Develop and maintain international standards for openBIM:
  - buildingSMART Processes
  - buildingSMART Dictionary
  - buildingSMART Data model



# Lifecycle Responsibility

**Requirements**

**Suppliers**

**Site**

**Material**

**Form**

**Contracting**

**Estimate**

**Price**

**Commission**

**Quality**

**Operate**

**Safety**

**Modify**

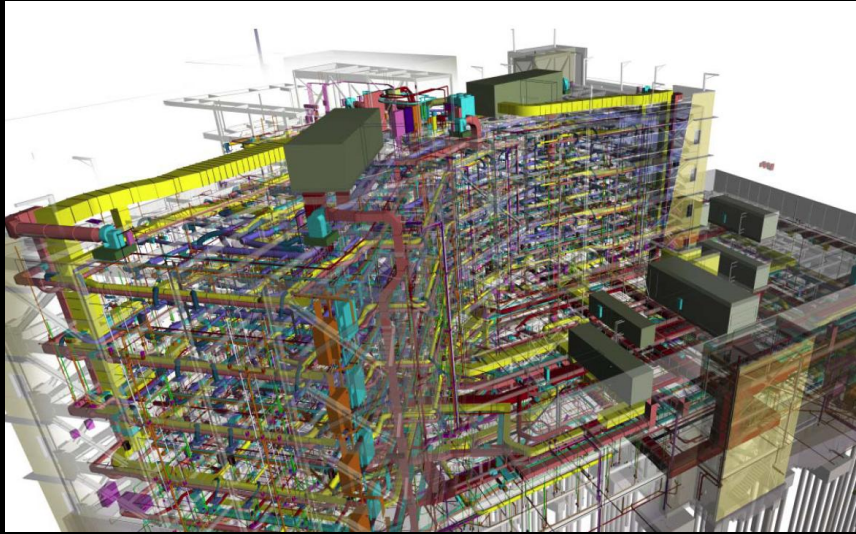
**Schedule**

**Maintain**

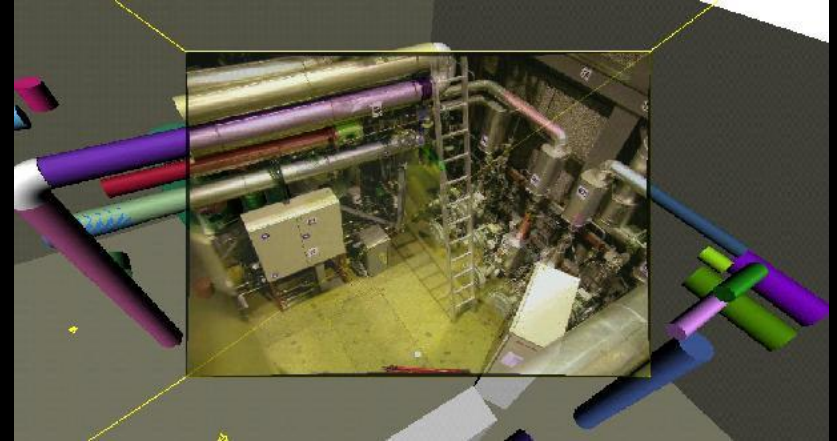
**Cost**



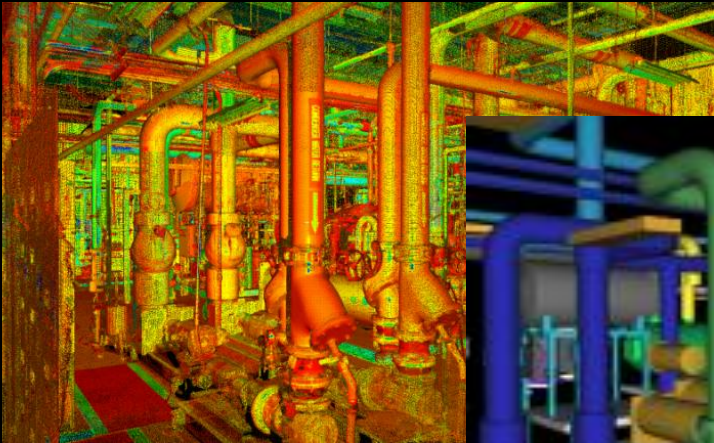
# Built Environment



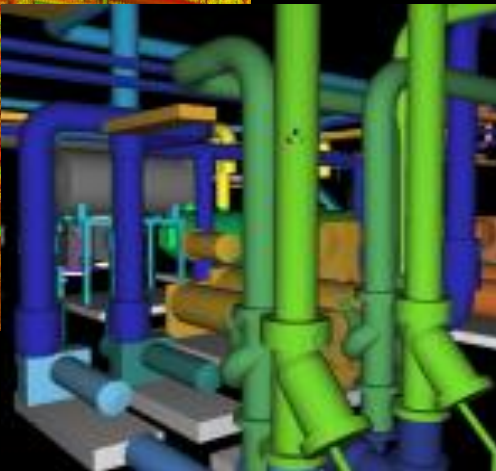
Sutter Medical Center – Castro Valley – DPR Construction



Tahir Rabbani Shah - Delft University of Technology, The Netherlands



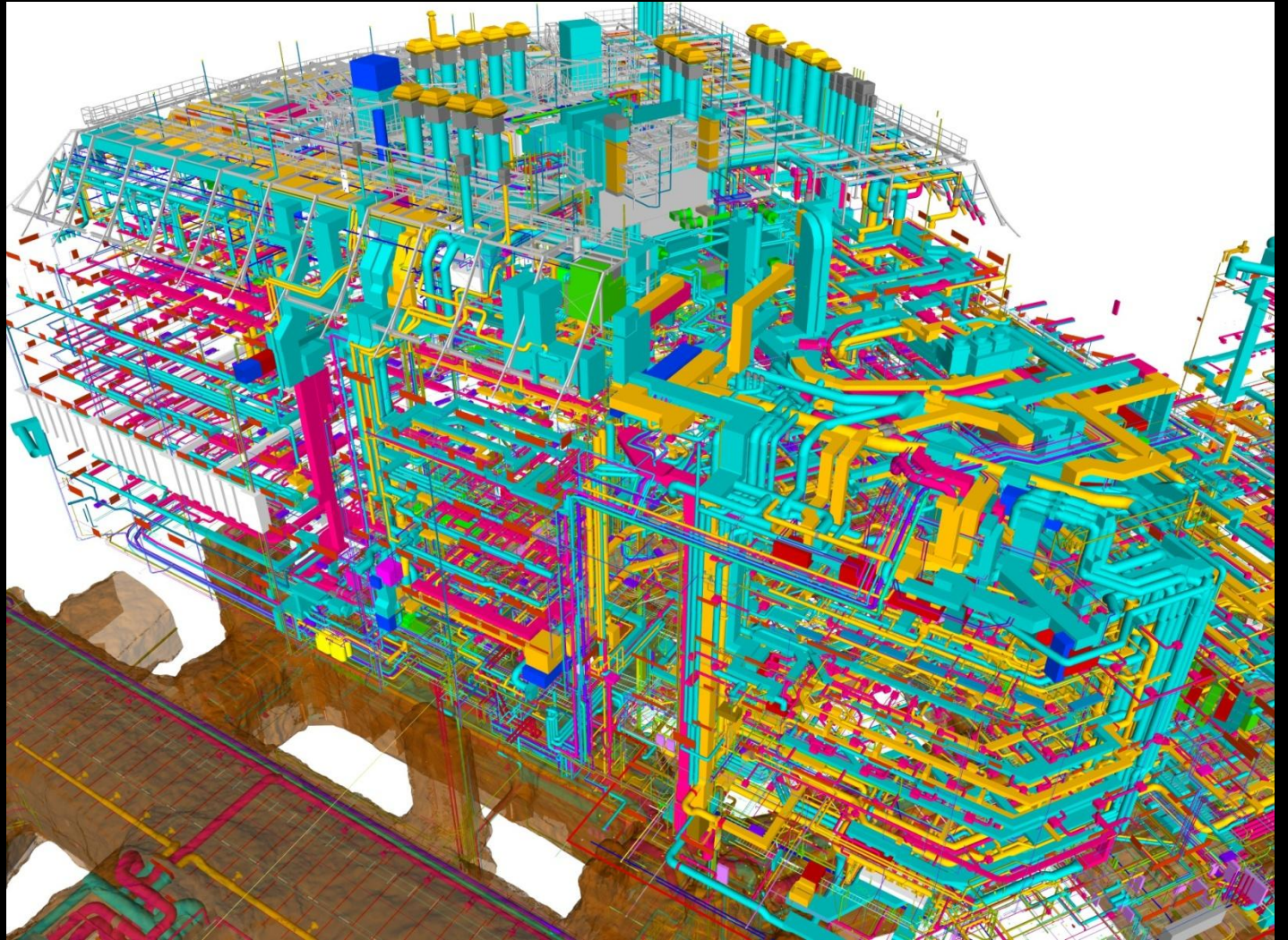
© 2010 Travis Reinke



© ESRI – BISDM – Phoenix Sky Harbor Airport



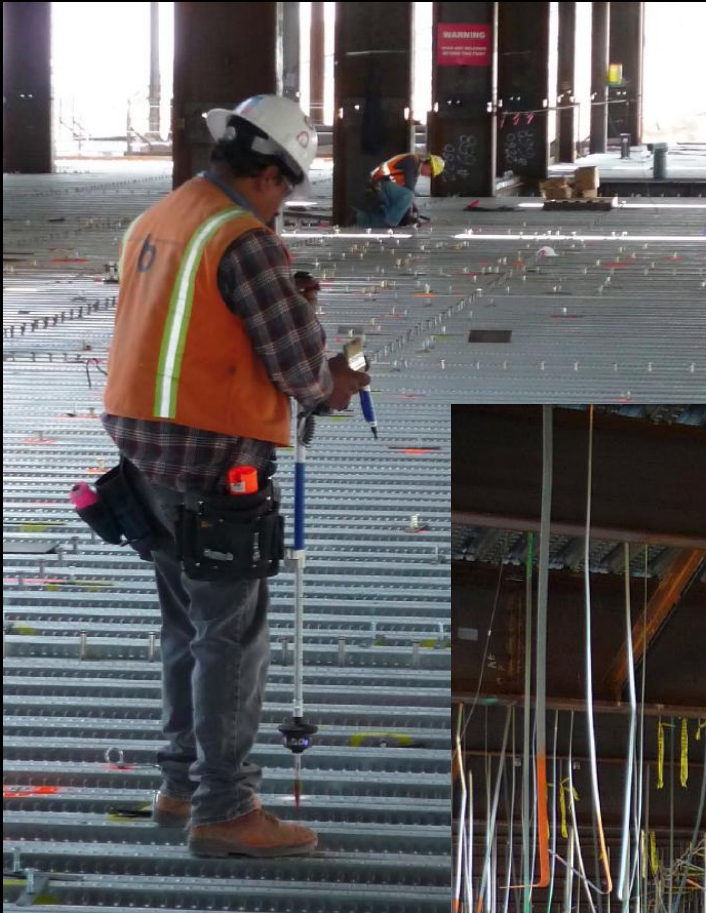
**Model = Building**



Granlund

© 2010 NIBS

# New Ways of Working



Palomar Medical Center West – CO Architects

# Modular and Prefabricated



SKANSKA



SKANSKA

# Improve Safety



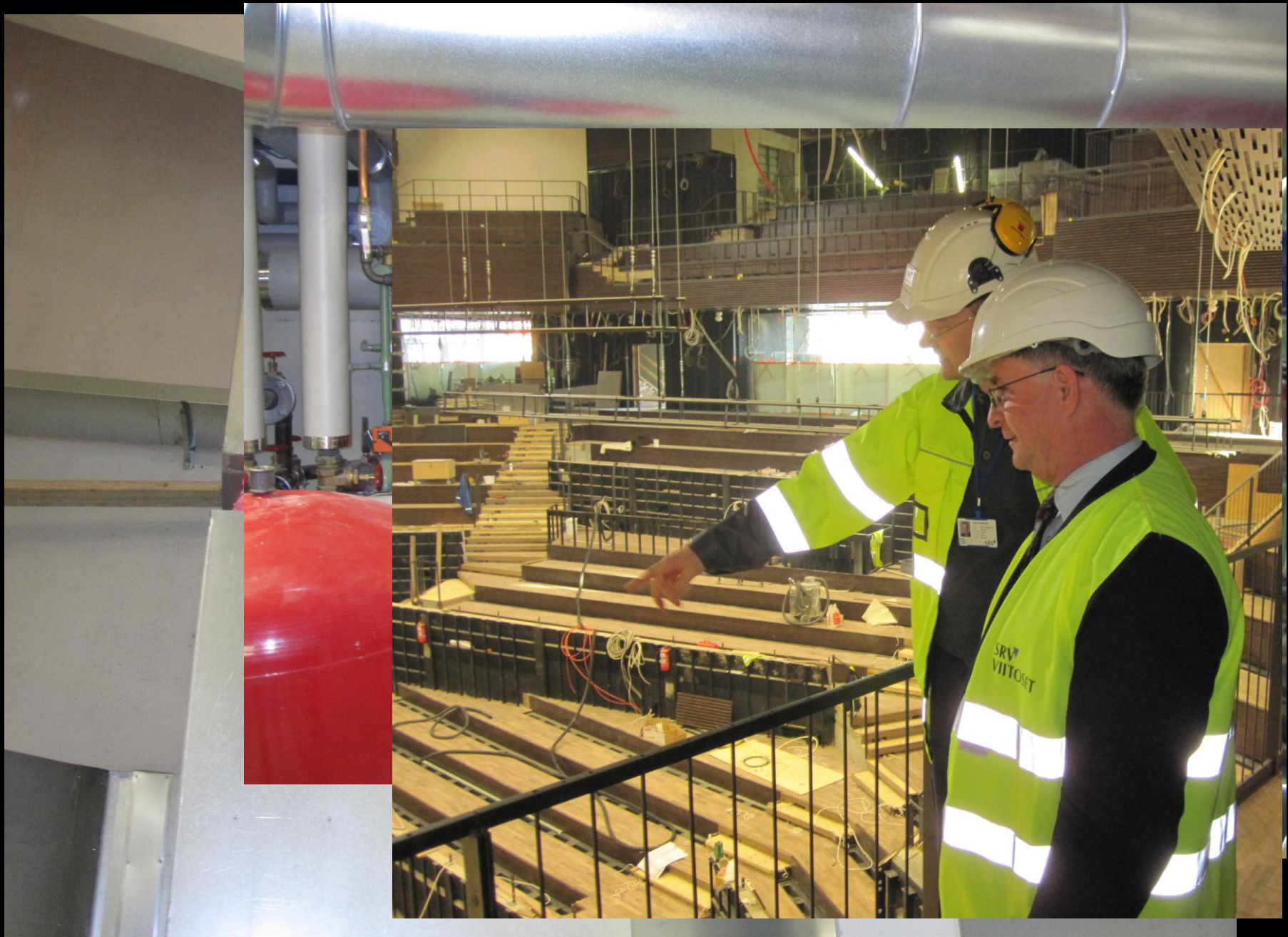


SKANSKA

**Faster & Less Cost**



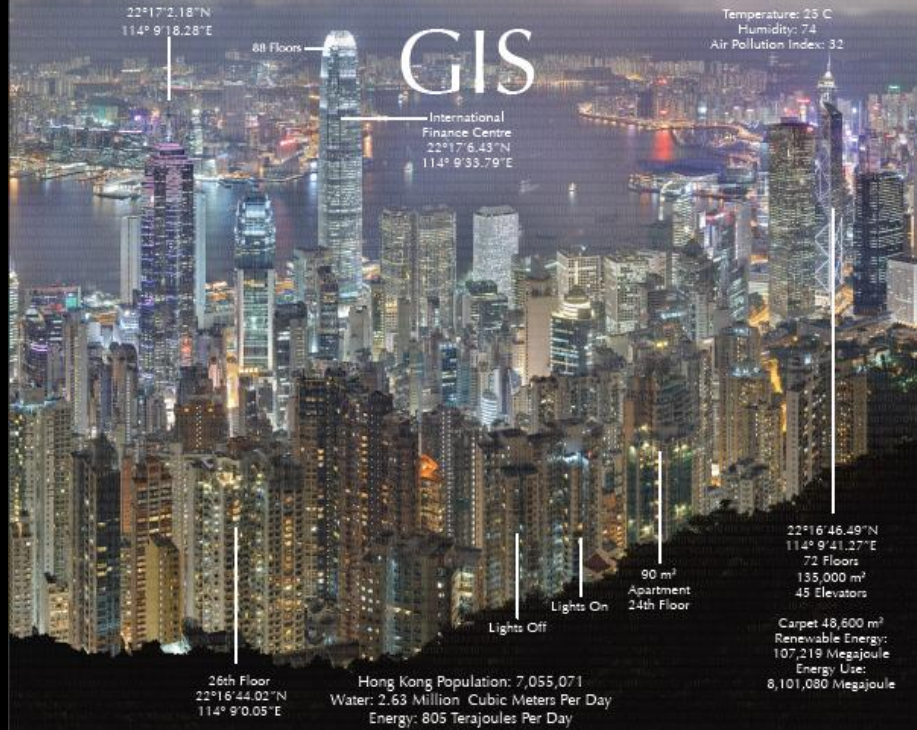
# Open BIM



# Spatial Integration

Fall 2010

# LOCATION LOCATION LOCATION



# BIM BIM BIM

Photo of Hong Kong from Victoria Peak: Samuel C. Looie | 393M | 22°16'42.507"N | 114°8'47.86"E  
Creative Commons: <http://creativecommons.org/licenses/by/3.0/> | [http://commons.wikimedia.org/wiki/File:Hong\\_Kong\\_Night\\_383m.jpg](http://commons.wikimedia.org/wiki/File:Hong_Kong_Night_383m.jpg)



**Thank You**