

Northwest Construction Consumer Council

"Washington ACTE's mission is to support our members in providing high quality CTE opportunities for all students in Washington State."

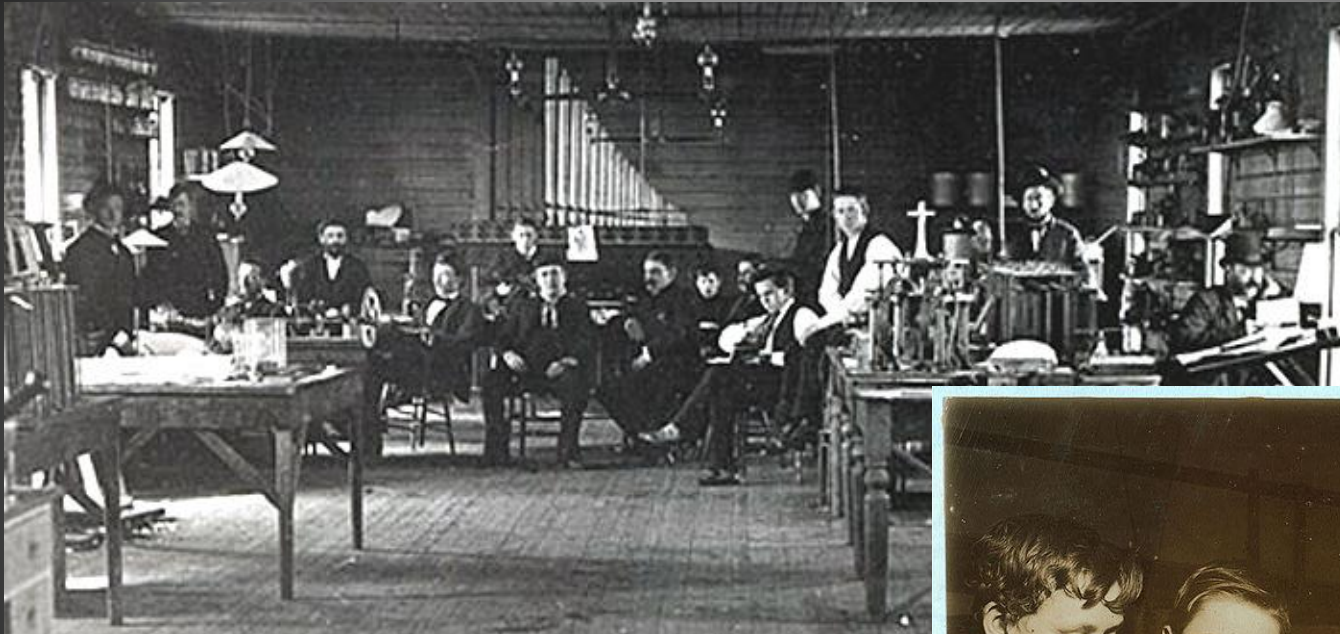


Our Association

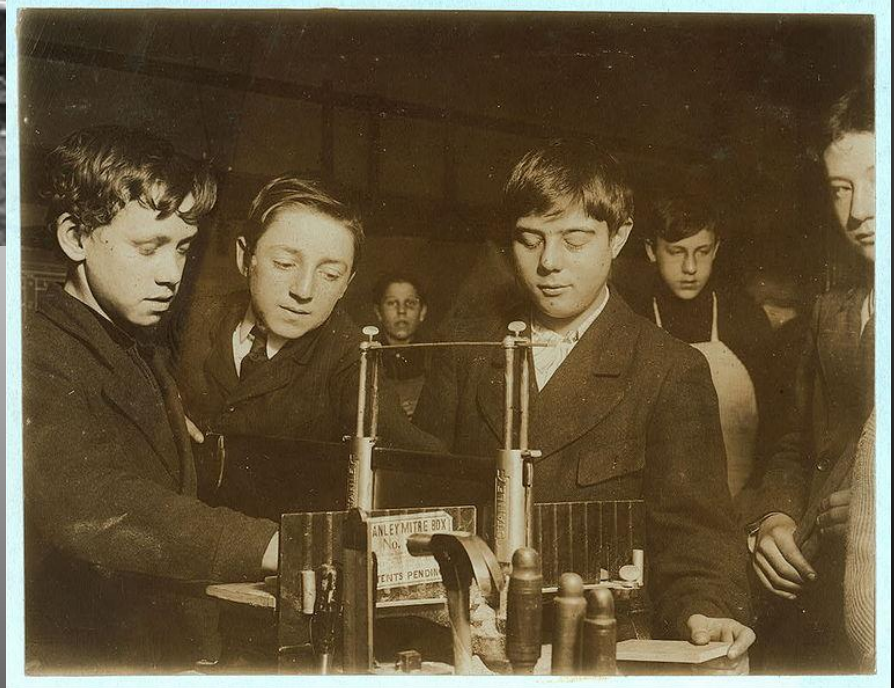


- Our Core Purpose is to provide leadership and services to our members as they prepare students for lifelong career success.
- We accomplish our purpose by providing members with:
 - Quality professional development
 - Advocacy and promotion of Career and Technical Education
 - Advancement of policy and legislation
 - Networking and communication
 - Continuous association improvement

100 Years of Educational response...



- Edison Workshop
- High School Class

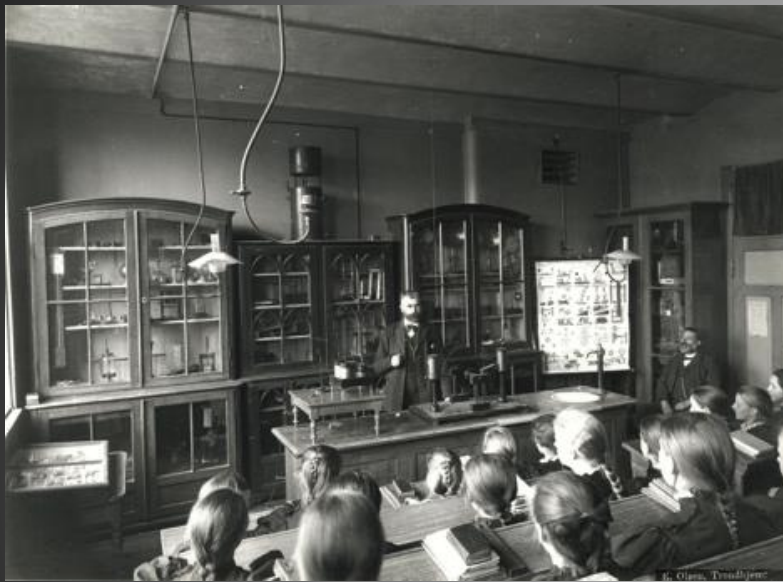


... to the needs of the nation...

- Smith-Hughes Act
1917



... change and response...



"WHATEVER BECAME OF
AUTO REPAIR AND BOOKKEEPING?"

Today, it's about STEM Careers...

- Career and Technical Education
- STEM – Science, Technology, Engineering and Math



Successful, happy lives...



S U C C E S S

IN THE NEW ECONOMY

HOW PROSPECTIVE COLLEGE STUDENTS CAN GAIN A COMPETITIVE ADVANTAGE

Graduation Requirements



The Washington State Board of Education



Search

- Home
- About Us ▾
- Meetings ▾
- Materials ▾
- Our Work ▾
- Links ▾
- FAQs ▾
- News
- SBE Blog
- Contact Us

GRADUATION REQUIREMENTS

2013

2014

2015

2016

2017

2018

2019



Graduation Requirements

Click on your year to see the state graduation requirements. Students are assigned an expected graduation year at the time they enter ninth grade ([WAC 180-51-035](#)). They are held to the graduation requirements of that graduation year regardless of the year they actually complete high school.

Career- and College-Ready Graduation Requirements

Staff Contact:
[Linda Drake](#)

In the 2014 session, the Legislature passed [E2SSB 6552](#) that directed the SBE to adopt rules to implement the Career- and College-Ready Graduation Requirements adopted in the board resolution of [November 10, 2010](#), and revised on [January 9, 2014](#), with some modifications. The Board adopted [rules](#) to E2SSB 6552 on July 10, 2014 ([concise explanatory](#)

Moving forward ...

- Meeting demands of students and society
- Success requires post-secondary education
- CTE & Programs of Study
- 20/26 occupations require an associate degree or less



Opportunities for ALL students...



- Serving all students
- Curriculum aligned Frameworks
- 21st Century Skills
- CTE courses articulated to post-secondary education
- CTE is for each of the 1:2:7 ratio



... to be Successful!



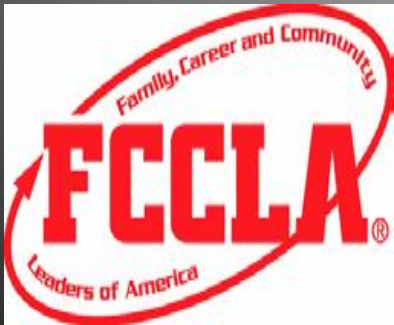
- 88% of CTE students in Washington graduated high school on time
- NEW
Career Skills
Certificate
Program



Who makes this happen...



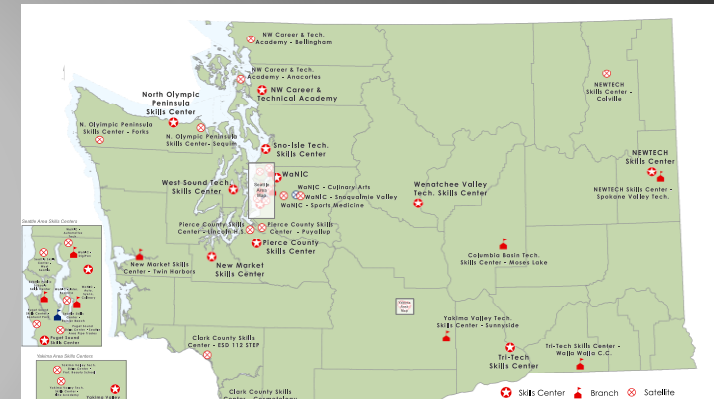
- 10 Sections based on CTE programing
 - WAVA – An Association of CTE Administrators
 - WAAE – Washington Association of Agriculture Educators
 - WSBEA – Washington State Business Education Association
 - WADOT – Washington Association of Diversified Occupations Teachers
 - FACSE – Family and Consumer Sciences Educators
 - CGCA – Career Guidance and Counseling Association
 - WAME – Washington Association of Marketing Educators
 - WITEA – Washington Industry Technology Education Association
 - WASTS – Washington Association for Skilled and Technical Sciences
 - HSCTE – Health Science Career and Technical Educators



... where?



- High School CTE programs
- Skills Centers



Centers in WASHINGTON
IScenters.espn | www.washingtonskillscenter.org

We are about ...



- Connecting CTE community
- Professional Development
- Leadership Development
- Advocacy in Washington State & DC



How can you connect...



- Serve on...
 - CTE Advisory Committees



- Provide...

- Classroom activities
- Work-based Learning
- Internships & Externships



- Donate...
 - Time
 - Materials
 - Equipment


Professional Development



Fall Conference

“CTE and STEM: Innovations in Integration and Implementation”

Great Wolf Lodge; October 30 & 31, 2014



UPDATE 10/2/14


CTE & STEM INNOVATIONS IN INTEGRATION & IMPLEMENTATION

WA-ACTE Fall Professional Development Conference

Date & Location: October 30 - October 31, 2014 - Great Wolf Lodge

Endorsed by Office of Superintendent of Public Instruction and Workforce Training and Education Coordinating Board

KEYNOTE: Corinne Hoisington, Central Virginia Community College



Corinne Hoisington is a full-time Professor of Information Systems Technology at Central Virginia Community College in Lynchburg, VA, with over 25 years of teaching experience. Corinne also travels over 200,000 miles a year speaking to college and university professors and K-12 venues in over 60 cities for such customers as the Microsoft Corporation, Cengage Learning, the international SRSW event, and many other universities and K-12 groups. Professor Hoisington is the recipient of the Microsoft Most Valuable Professional in Computer Programming. Corinne presently has authored over a dozen books with the Shelly Cashman series such as the Dreamweaver Creative Cloud, Windows 8, Outlook 2013, Office 2013, Android Boot Camp: Programming the Android for Beginners, version 2, Technology Now for SAM, and Visual Basic 2012 with App Development.

See Corinne's Publications at Barnes and Noble:
<http://products.barnesandnoble.com/search/author/corinne%20hoisington>

Purpose: This is a hands-on conference for individuals and school teams to attend! We will be sharing some of today's best practices in bringing the philosophy and systems needed to integrate Career and Technical Education (CTE) and Science, Technology, Engineering, and Math (STEM) for all students. Attendees will be provided the opportunity, time, and information on key components needed to develop a plan in delivering CTE and STEM for all students in their schools.

Target Attendees:

Administrators <ul style="list-style-type: none"> o Superintendents o CTE Directors o Curriculum Directors o Principals 	Educators <ul style="list-style-type: none"> o CTE Educators o STEM Educators o Community College Educators o Advisory Committees 	Community Members <ul style="list-style-type: none"> o Parents o Business Owners/Employees o Community Leaders o Industry Associations
---	---	--

Objectives: For attending teams and individuals to take what is learned to help integrate CTE and STEM components and/or programs back home.

FOR CONFIRMED Sessions - SEE ATTACHED Draft GRID

Registration Options: Check at wa-acte.org/confupcoming.php [\$300 thru 10/15/14 ■ \$350 after 10/15/14]

Great Wolf Lodge

\$98 (Per-Diem Rate)
thru 9/29/14

1-800-640-WOLF (9653)
Group Code 1410WAAS

Become a Strategic Partner...



- MIC, Manufacture Industry Council
- PMI, Project Management Institute
- WITA, Washington Information and Technology Association
- NWCCC, Northwest Construction Consumers Council



Advocacy




- Legislative Agenda
- Civic Engagement
- Connecting with local Legislators
- WOVE



Legislative Issues

- CTE Funding within McCleary
- CTE Credit
- Certification



2015[†]
Legislative Focus[†]

Washington Association for Career and Technical Education[†]
PO Box 315, Olympia WA 98507-0315[†]
Telephone: 360-786-9286 / Fax: 360-357-1491 / wa-acte@wa-acte.org / www.wa-acte.org[†]
Contact: Tim Knue, WA-ACTE Executive Director, tim@wa-acte.org[†]

The purpose of the Washington Association for Career and Technical Education (WA-ACTE) is to provide leadership and services to our members as they prepare students for lifelong career success. WAVA is an Association of Career and Technical Education Administrators that provides leadership to enhance and support Career and Technical Education (CTE) in communities and schools. Both organizations work closely with our K-12 workforce training/education and community/technical college partners to provide high quality CTE program opportunities for all students in Washington State (middle schools, high schools, and skill centers). WA-ACTE and WAVA have jointly developed and support this legislative agenda.

FOCUS: CAREER AND TECHNICAL EDUCATION FUNDING [†]			
Vision/Goal [†]	Plan of Action [†]	Legislative Involvement [†]	Impact [†]

CTE Funding 2015



OSPI RECOMMENDATION:

*Results in ...
Accountable, Transparent, Efficient and
Sustainable CTE funding.*

Full report available at the following link:

<http://www.k12.wa.us/LegisGov/Reports.aspx>

Join us moving forward...



- Engage us on Social Media...
 - Web Page
 - Washington ACTE Online Community
 - Twitter @WashCTE
 - Facebook "Washington ACTE"



Questions...



Tim Knue

tim@wa-acte.org

Office: 360-786-9286

Cell: 360-202-5297



Washington Association for Career and Technical Education

"... providing high quality CTE opportunities for all students in Washington State."

