

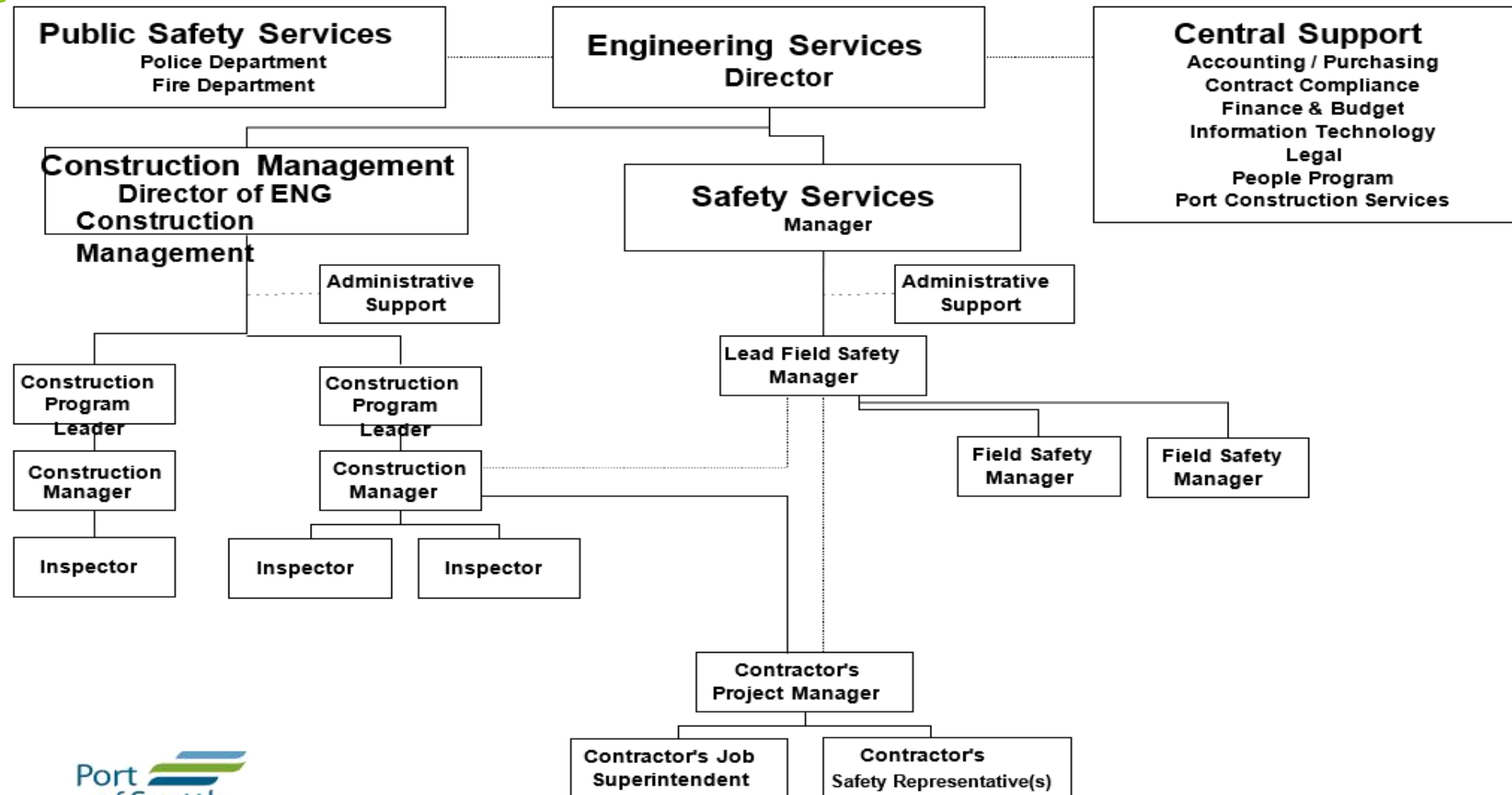
Safety and Quality Control Field Practices

By

Brian Sweet, PE, CCM

Director Engineering - Construction Management

Port of Seattle Construction Safety Organization



Safety Practices

- ▶ **Safety Plans**
 - ▶ Requirements for Onsite Safety Specialists
 - ▶ Owner's rights
 - ▶ Safety Training
 - ▶ Drug Free Workplace
- ▶ **Field Practices**
 - ▶ Notifications
 - ▶ Reporting Structure
 - ▶ CSIRs
 - ▶ Weekly Safety Walks
- ▶ **Work in Unique Areas**
 - ▶ Operational Safety on Airports

Safety Plans

▶ Leadership

- ▶ Site Specific Safety Plan
 - ▶ Required for NTP
- ▶ Requirements for Onsite Safety Personnel
 - ▶ Qualifications Specified
 - ▶ Collateral vs Primary Duty
 - ▶ Multiple Shifts
- ▶ Owner Rights
 - ▶ Inspections/Investigations
 - ▶ Stop Work
 - ▶ Port Specific Standards
- ▶ Drug Free Workplace

Safety Field Practices

- ▶ Weekly Safety Inspections
- ▶ Contractor Safety Inspection Reports
 - ▶ Identifies Issues
 - ▶ Documents Response
- ▶ Notifications
 - ▶ Near Miss
 - ▶ Property Damage
 - ▶ First Aid
 - ▶ Recordable
 - ▶ Lost Time
- ▶ Accident Investigations
- ▶ Monthly Safety Reviews
 - ▶ Includes all contractors' safety reps
 - ▶ Share all Notifications

Operational Safety on Airports

- ▶ **Specific and Unique Requirements for Work on the AMA & AOA**
 - ▶ AMA = Aircraft Movement Area (Taxiways and Runways)
 - ▶ AOA = Aircraft Operating Area (Gates and Aircraft Parking)
- ▶ **Vehicle Operations**
- ▶ **Knowledge of FAA Circulars (Rules)**

Quality Project Delivery

- ▶ **Design Quality Management**
 - ▶ Interdisciplinary Coordination
 - ▶ “Clash Detection”
 - ▶ As-Built Conditions
- ▶ **Quality Control Plans and Procedures**
 - ▶ Staffing and Staffing Qualifications
 - ▶ Pre-Installation Meetings
 - ▶ Mockups
 - ▶ Factory Testing/Inspection
- ▶ **Quality Assurance Plans**
 - ▶ Tying Pay to Quality - FAA Pay Factors
- ▶ **Long Term Quality Assurance**
 - ▶ Maintainability